

Planimetria delle zone cuprifere
 delle colline metallifere Volterrane
Scala 1:200.000

Nord.



Colline Metallifere del Volterrano

Sezioni Geologiche

Scala 1:25000

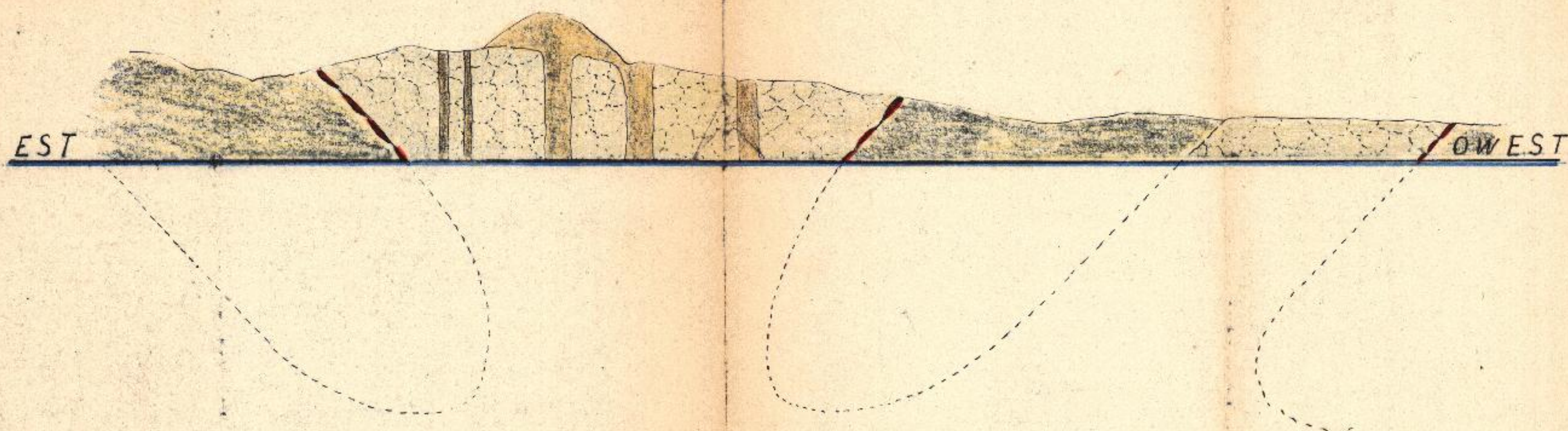
SEZIONE 1-1







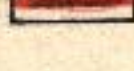
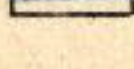
SEZIONE 2-2



SEZIONE 3-3



Indicazioni

-  Terreni sedimentari
-  Rocce serpentinosi
-  » diabasiche
-  Manifestazioni cuprifere
-  Ricerche fatte con gallerie e pozzi
-  Linee al livello del mare

G. Novaris Perito M.